



Type C(OU) Kernel silencer

Application

The TIO acoustical kernel type C is designed for various applications and various media. The acoustical kernel silencer gives an excellent attenuation in combination with a relatively low back pressure and easy installation.

Design

The operation of the kernel silencer is based on the absorption system. The gas flow passes along a perforated absorptive element filled with highly efficient sound absorbing material, giving an excellent attenuation over a wide frequency range. The acoustical kernel silencer furthermore interrupts the free propagation of sound(waves) in a duct. The acoustical kernel silencer can easily be installed in existing or new ducts.

Attenuation

The average attenuation is depending on the project data and the dimensions of the kernel. Maximum app. 35 dB(A).

Gasvelocity

The maximum allowable gas velocity is depending a.o. on the noise requirements and allowable backpressure. Recommended max. 35 m/sec.

Pressure loss

Depending on the silencer configuration and project data.

Temperature

Maximum: 600° C

Special designs are available for higher temperatures.

Material

Standard – 1.4301

Executions in 1.4571, Cor-Ten, S235, etc. are possible.

Isolation

N.a.

Paint

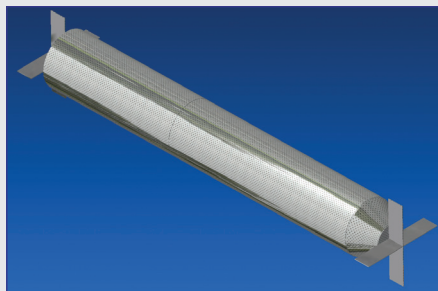
N.a.

Installation

The acoustical kernel can be installed vertically, horizontally or in any position in any new or existing duct.

Special design

Special designs (f.e. L or U shapes) and alternative executions with multiple absorptive rings and special flow profiles are optional.



Parallelweg 9 2921 LE • PO box 701 2920 CA • Krimpen aan den IJssel The Netherlands
P +31 (0)180 514 055 • F +31 (0)180 517 264 • E info@tiobv.nl • www.tiobv.nl